

# Jeux d'Enfants

## N°. 1 Marche

Allegretto moderato (♩ = 132)

Georges Bizet

Cor1/2

Cor3/4

*pp*

Corno 3

*p*

8

Corno 1

Corno 2

*p*

*p*

4

17

*a 2*

*f p f p*

C1/2

C3/4

23

*f p dim. ppp*

C1/2

C3/4

29

*ff f ff*

C1/2

C3/4

37

C1/2

*f* *ff* *ff* *ff*

2 *a 2* 3 2 *a 2* 3

C3/4

46

C1/2

*f* *p* *f* *p*

C3/4

52

C1/2

*f* *p* *pp*

C3/4

58

C1/2

*ff* *f* *> p*

*a 2* 3

C3/4

Corno 4

Corno 3

*dim.* *dim.*

65

C1/2

*f* *> p* *ppp*

Corno 1

C3/4

Corno 4

# N°. 2 Berceuse (La Poupée)

Andantino quasi andante (♩ = 136)

The score is divided into four systems, each with two staves: C1/2 (C1 in bass clef, C2 in treble clef) and C3/4 (C3 in treble clef, C4 in bass clef). The key signature is one sharp (F major) and the time signature is 6/8.

- System 1 (Measures 1-8):** C1/2 starts with a vocal line (Vc.) in the first measure. Horns 2 and 3 have rests for 8 measures, then play a half note G4 in the 9th measure. Horn 4 has a rest for 2 measures.
- System 2 (Measures 16-26):** Horn 1 (C1/2) plays a half note G4 in measure 16. Horn 3 (C3/4) plays a half note G4 in measure 16. Horn 4 (C3/4) plays a half note G4 in measure 26.
- System 3 (Measures 27-34):** Horn 2 (C1/2) plays a half note G4 in measure 27. Horn 1 (C1/2) plays a half note G4 in measure 28. Horn 1 (C1/2) plays a half note G4 in measure 34.
- System 4 (Measures 35-42):** Horn 2 (C1/2) has a rest for 8 measures, then plays a half note G4 in measure 42. Horn 3 (C3/4) has a rest for 8 measures, then plays a half note G4 in measure 42.

Dynamic markings include *pp*, *ppp*, *p*, and *pp*. Rehearsal marks are shown as double bar lines with a double slash.

## N°. 1 Impromptu (La toupie)

Allegro vivo (♩ = 152)

*a 2*

C1/2 *ff* **3**

C3/4 *pp* **3** Corno 3

13 Corno 1

C1/2 *pp* *p* **7** *ppp*

C3/4 Corno 4 **7**

31 **6** *a 2*

C1/2 (Archi) *ff*

C3/4 **6** *ff dim.* *p dim.* *pp* 1 2 3 4 5 6 7 8

49 Corno 1 Corno 2

C1/2 *pp* *p* *p* *pp*

C3/4 Corno 3 Corno 3

60 **4** *a 2*

C1/2 *dim. - - - molto* *ppp* *ff* *ff*

C3/4 **4** *ff*

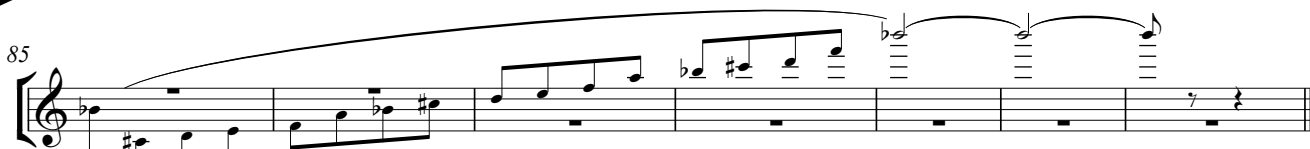
N°. 4 Duo (Petit mari, petite femme)  
(Corni tacet)

Andantino (♩ = 76)



(Vi. 1)

85



(Vi. 1)

N°. 5 Galop (Le bal)

Presto (♩ = 184)



(Vi. 1)

*ff*

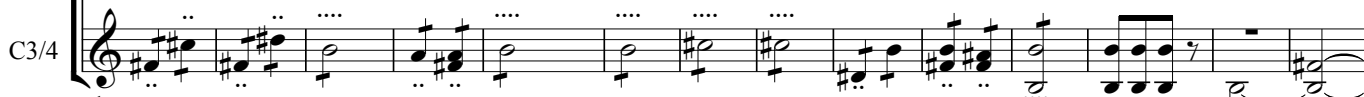


*a 2 sempre*

21



*pp — p*



35



*=mf — sf > pp — p — mf — sf > pp*

*ff*



48



*fff*



63

C1/2

8

(Fl.)

*ppp*

a 2

C3/4

8

81

Corno 1

C1/2

*pp*

*poco a poco cresc.*

C3/4

89

C1/2

*mf* cre - scen - do *f ff*

C3/4

*a 2 sempre*

101

C1/2

*pp* — *p* — *mf* = *sf* >

(a 2)

C3/4

113

C1/2

*pp* — *p* — *mf* = *sf* > *pp* *ff*

2

C3/4

2

124

C1/2

C3/4

*a 2*

*fff*

**2**

...

...

133

C1/2

C3/4

*pp*

*pp*

*p*

*mf*

*f*

141

C1/2

C3/4

*a 2*

*fff*

*a 2*

**5**

**5**

153

C1/2

C3/4

*a 2*