

Vierte Symfonie 1851

Robert Schumann, Op. 120

Ziemlich langsam

*)

f *p cresc.* *sf* *p* *sf* *p*

9 *f* *pp* *sf* *p* *cresc.*

16 *cresc.* *f* *dim.* *p*

23 *Cor. 3/4* *stringendo* *cresc.*

29 **Lebhaft** *f* *f*

39 *ff* *sf* *sf*

*) - altijd a 2, tenzij anders aangegeven

**) - F-sleutel in klassieke notatie, dus een octaaf lager

50

f *p* *f* *p* *f* *p* *p dolce*

59 Cor. 1/2 B

p 2

70 Cor. 1/2

f

78

p cresc. sf *sf*

86 C

sf *sf* *sf* *sf*

101 D

f *f*

109

f *f* *f*

118

ff

123 Cor. 1/2

129 Cor. 1/2

ff

E

136 Cor. 1/2

141 Cor. 1/2

sf *sf* *p dolce*

151

f Cor. 3 *p*

p cresc.

163

p *f*

171

f *f* **F**

179

f *f*

187

f *f*

194

G

ff

199 Cor. 3/4

sf

205 Cor. 3/4

sf *ff*

211 Cor. 3/4

216

H

sf *sf* *p dolce cresc.*

307 M

cresc. *ff*

cresc.

320 N

331

p *cresc.* *f* *f*

343

351

sf *sf* *sf* *sf* *sf*

Romanze Ziemlich langsam

359 Cor. 3/4

f *mf*

374 Cor. 3/4

cresc. *dim.* *p*

382 Cor. 3/4

p dolce

390 Cor. 3/4

398 Cor. 3/4

pp

Scherzo Lebhaft

411 Cor. 3/4

f *f*

420 Cor. 3/4

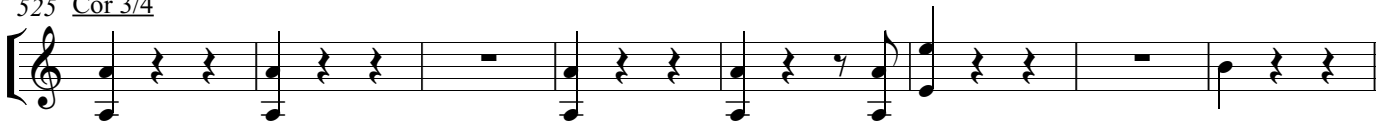
Cor. 3/4

427

435

p

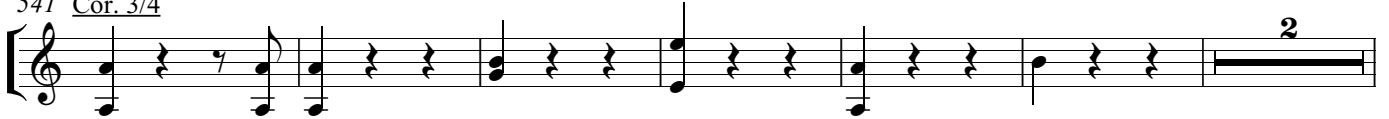
525 Cor 3/4



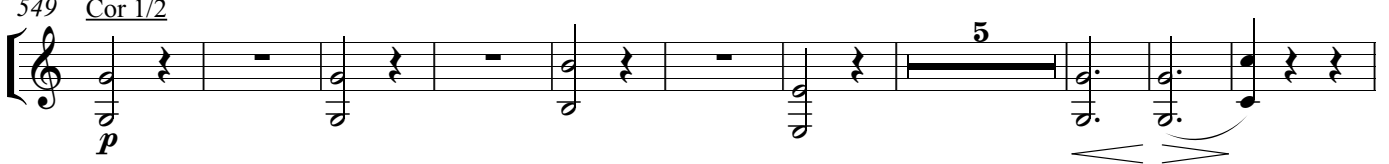
533 Cor. 3/4



541 Cor. 3/4



549 Cor 1/2



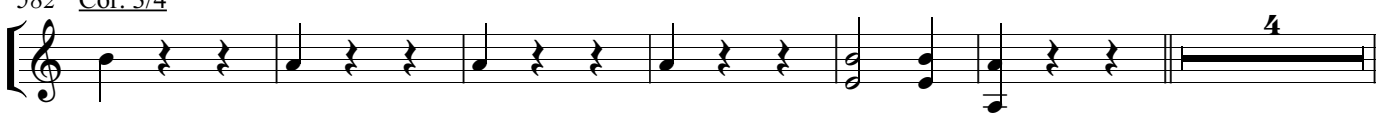
564 Cor 3/4



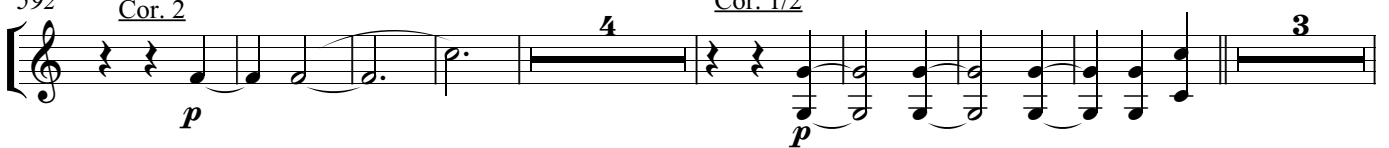
574 Cor. 3/4



582 Cor. 3/4



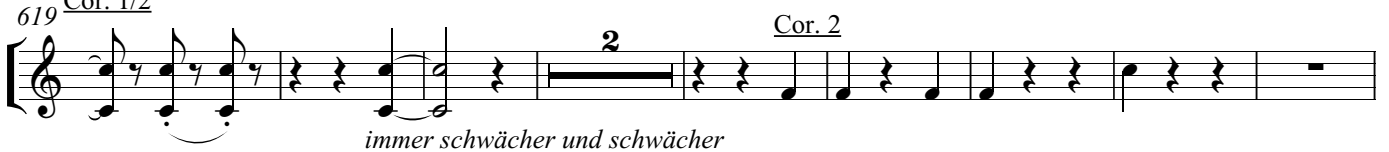
592 Cor. 2



607 Cor. 1



619 Cor. 1/2



etwas zurückhaltend

629 Cor. 1/2



644 **Langsam**

T

markiert *cresc.*

pp *cresc.*

stringendo

f *markiert* *p* *cresc.*

p

cresc. *f*

660 **Lebhaft**

ff

sf

U

f *f*

2 2

677

f *dim.*

p dolce

686

sfp *sfp* *sfp*

p

693

sfp *p* *p*

V

699 Cor. 3/4

p

703 Cor. 3/4

cresc. *f* *f* *f*

706 Cor. 3/4

p *cresc.*

709

f *f* *f* *f* *f*

716

V.S.
Cor. 3/4

722

p

p *sf* *p* *sf* *p*

728

cresc.

734

740

f

f

746

f *markiert* *f*

753

sf *f*

760

f *f*

1 2 3 4 5 6

p *cresc.*

770

p

7 8

p dolce

775

p *sfp*

779

sfp *sfp*

783

sfp *dim.* *p*

2

2

790

p *p* *cresc.*

p

795

f f f *p* *cresc.*

p

799

f f f f f *f* *f*

f *f* *f*

808

sf *p* *sf* *sf* *p* *sf*

sf *sf* *p* *sf*

815

mf *cresc.*

mf *cresc.*

821

f *p* *cresc.*

p *cresc.*

827

Schneller

f *sf*

cresc.

834

sf

841

847

ff sf ff sf p cresc.

856

861

f

867

873

sf